



## Learn from Substance Use Disorder Experts!

**What:** ECHO (Extension for Community Healthcare Outcomes) is an opportunity for providers across the state to get specialist knowledge, clinical advice and recommendations from substance use and pain management specialists in a virtual learning network.

**More about ECHO:** ECHO uses videoconferencing technology to connect addiction and pain management specialists with providers to discuss de-identified cases related to substance use disorders. Each ECHO call consists of a brief didactic presentation followed by a clinical case discussion from a provider and recommendations from the team for treatment. Visit <https://echo.unm.edu/> for more information.

### How it works:

- Join an online video conference from your office
- Share and discuss clinical cases related to pain management and substance use disorders
- Learn from experts in pain management and substance use disorders

### Clinical Goals/Objectives:

- Improve compassionate patient-centered care with substance use disorder and pain management.
- Teach evidence-based principles for screening and treatment, harm reduction, stigma reduction, and compassionate patient centered care for substance use disorders and pain management.
  - Early screening and recognition of pain and substance use disorders to aid in stigma reduction and early intervention.
  - Develop self-efficacy for providers and assist in referrals for pain and substance use disorders.
  - Provide tools and documented strategies for working with clients including medication, referrals, lifestyle changes, early intervention, and treatment.

**Who should participate:** Any provider interested in more effectively treating clients and patients with pain management and substance use disorders.

**When:** 12 - 1:15 p.m. (CST), on Fridays starting Feb. 2 (see Call Didactic Schedule) via Zoom Videoconferencing.

**Why Participate:**

- Opportunities to collaborate with experienced providers statewide including the following professions- LIMHP, physician, nurse, social worker and individuals with lived experience.
- Integration of behavioral health into primary care
- No cost to participate

**To Participate and register:**

Register for the ECHO series at:  
<http://bit.ly/PainAddictionECHO>



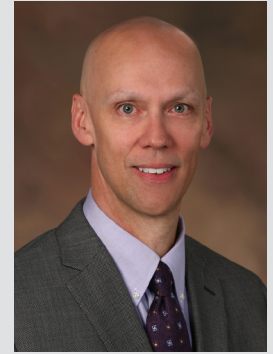
**Curriculum for Case-Based Learning and Discussion:**

- Promoting Provider Team Care
- Screening, Assessment and Diagnosis for Substance Use Disorder and Data Trends
- Pain Management: Non-Pharmacological Interventions
- Pain Management: Pharmacological Interventions
- Substance Use Disorder Treatment: Pharmacological Interventions
- Substance Use Disorder Treatment: Non-Pharmacological Interventions
- Relapse, Peer Support and Primary Support

*This project was supported in whole or part by the State Targeted Response to the Opioid Crisis Grant #1H79TI080263-01 from SAMHSA CSAT and Nebraska DHHS Division of Behavioral Health.*



**Dr. Christine Chasek**  
Clinical Mental Health Counselor and Addiction Counselor, Kearney



**Dr. Todd Stull**  
Addiction Psychiatrist, Lincoln



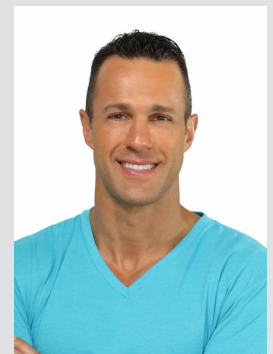
**Dr. John Massey**  
Pain Medicine Specialist, Lincoln



**Dr. Sandra Cook-Fong, MSW**  
Licensed Clinical Social Worker, Kearney



**Dr. Ken Zoucha**  
Addiction Medicine Specialist, Hastings



**Aaron Barnes**  
Addiction Recovery Coach and Personal Trainer, Omaha